

HAND-OPERATED LUBRICATION PUMP

SMO, SMG

USE

SMO lubrication pumps for lubricating oil, and SMG lubrication pumps for grease, are used as sources of pressure lubricant, oil or grease for single-line central lubrication. Lubrication system circuits are equipped with single-line dosers of the SKIE, SKIB and SKIC series using the SRK distribution manifolds, or with the SMIE and SMIB dosers installed directly at the lubrication point.

Hand-operated lubrication pumps are usually used for smaller circuits, for occasional additional lubricating of various machines and equipment or their functional parts, according to the lubricating instruction. Lubrication pumps are used for metalworking, woodworking, textile, food-processing, shoemaking, papermaking, printing and other machines and equipment.

SMO, SMG lubrication pumps are supplied with 1-litre lubricant tanks, made of plastic. The nominal supplied dose is uniformly fixed at 13 cm³/stroke of the operating lever with operating pressure of 30 bar.

DESCRIPTION

The lubrication pump consists of the lubricant tank whose filling hole containing a pouring sieve (SMO version for oil) is protected with a screw-on cap. Inside the tank, there is a pumping device, an operation cylinder with a piston, and an operation mechanism with a backpressure, bypass and pressure-release valve. The expansion stroke of the valve is initiated by moving the hand lever, the return motion of the piston by means of a pressure spring. The lubricant level is clearly seen in the plastic tank. The outlet threaded joint is positioned at the upper side of the tank, on its right or left, depending on the lubrication pump model.

FUNCTIONS

By moving the hand lever and holding it for a short time (about 3 sec.), the lubricant is pressed out through the backpressure valve to the outlet. When the hand lever and the piston are moved back, there ensues negative pressure in the operation cylinder that sucks in lubricant into the cylinder from the tank when the suction hole opens. Thanks to the pressure-release valve, pressure in the lubrication circuit decreases to the release pressure that is needed for correct functioning of dosers (new cycle). The bypass valve reduces the maximum operating pressure for the used lubrication components – dosers to 30 bar, which protects them from damage.

ASSEMBLY, OPERATION AND MAINTENANCE

The lubrication pump is mounted in a vertical position. It is fixed through 4 holes with diameters of 6.5 mm. After the lubrication pump is mounted to the selected position, it is ready to be connected to the lubrication circuit with dosers. The length of the lubrication pipe from the lubrication pump to the farthest doser should not exceed 15 m; in other cases, you should consult the supplier.

After mounting the lubrication pump, the tank is filled with prescribed lubricant, and by moving the hand lever several times the lubrication pump is deaerated so that the lubricant can flow out regularly without air bubbles. After deaerating, the lubrication pump can be connected to the lubrication circuit. The lubrication pump outlet is designed to be connected to TR 6; outlets for connecting to TR 8 or other diameters have to be stated in the order.

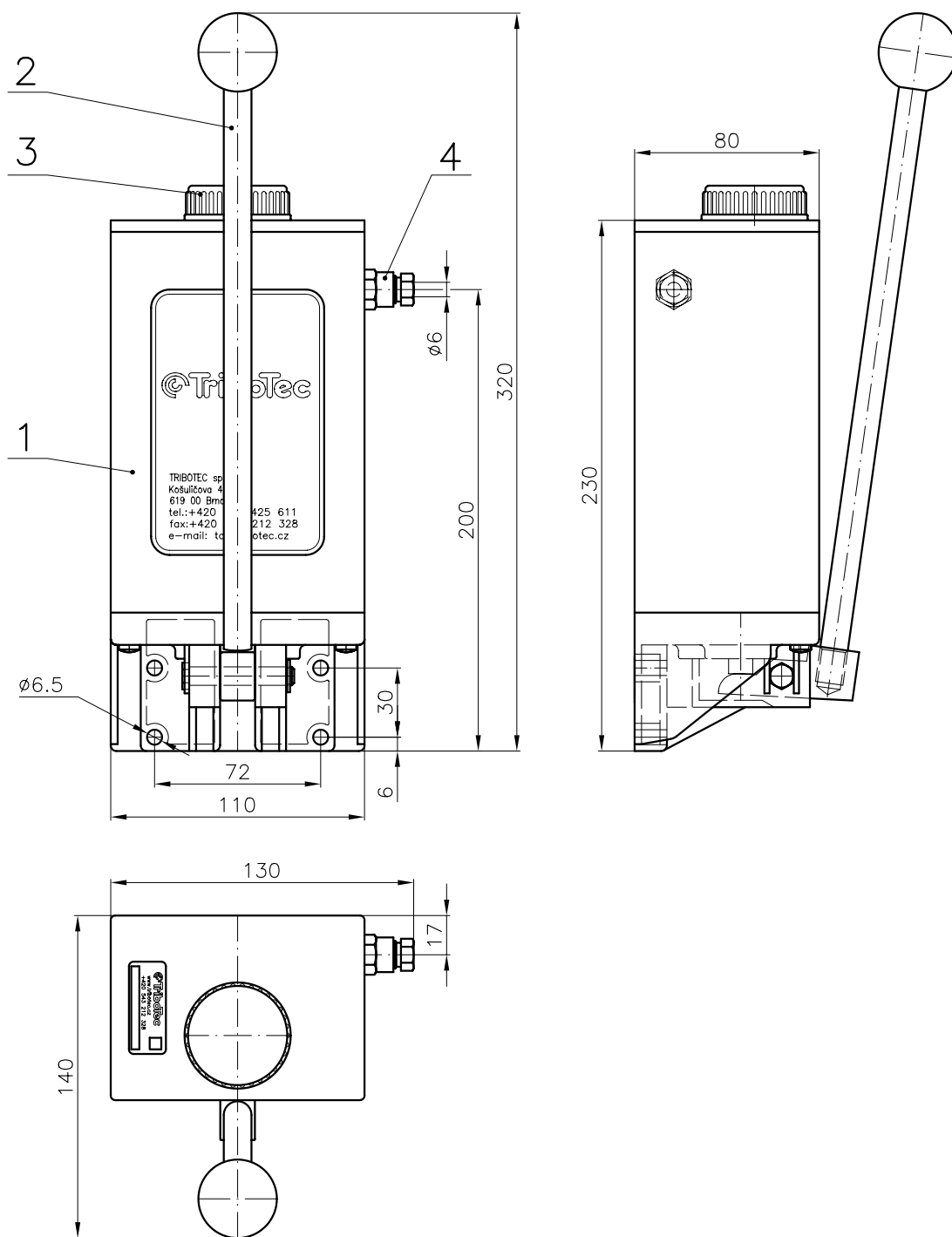
For the lubrication pump to function properly, each lubrication circuit branch has to be deaerated too; furthermore, it is necessary to keep the pipes clean, i.e. to rid the pipes of burrs and other impurities. Besides timely refilling with lubricant, the lubrication pump doesn't require further maintenance or operation.

TECHNICAL SPECIFICATIONS

Operating pressure		30 bar
Release pressure		about 1 bar
Nominal feed rate		13 cm ³ / stroke
Maximum number of cycles		5 min ⁻¹
Lubricant tank capacity		1 dm ³
Number of outlets		1
Outlet threaded joint		M12x1 mm, for TR 6.8 mm
Lubricant	oil	min. 50 mm ² . s ⁻¹
	grease	NLGI 000, 00
Lubricant temperature		0 to 80 °C
Working environment temperature		0 to 60 °C
Weights		1.3 kg

STANDARD VERSION

OIL		GREASE		version
Identification	Code	Identification	Code	
SMO-1PP	1001231	SMG-1PP	1001220	right outlet, TR 6
SMO-1LP	1001230	SMG-1LP	1001221	left outlet, TR 6



Pos	Název	Name
1	Zásobník maziva	Lubricant tank
2	Ruční páka	Handspike
3	Plnicí otvor	Filling hole
4	Vývodní šroubení	Outlet pipe union

Název/Name	RUČNÍ MAZACÍ PŘÍSTROJ / HAND-OPERATED LUBRICATION PUMP	©Tribotec s.r.o. Košuličova 4 Brno www.tribotec.cz +420 543 212 328
Typ/Type	SMO, SMG	
Kód/Code		