

TWO-LINE HYDRAULIC CHANGE-OVER VALVE DPT 3



Description

The DPT 3 hydraulic change-over valve is used as independent component of two-line lubricating circuits that operate with grease and oil. The valve is suitable for central lubrication systems with all types of two-line distributors (e.g. DLDA, DLDC, DLDD, DLDF, ZVM) and lubricating pumps (e.g. Z1, BEG-R, UCF, BPG).

The valve is usually located behind lubrication pump outlet into distribution piping or together with pump on a bedplate. It serves to ensure alteration of lubricant supply into both lines of lubrication circuit. The change-over valve is fitted with two outlets into two lines of circuit, one

inlet from the lubrication pump, and one return outlet to the lubrication pump for pressure release in the respective line of the lubrication circuit.

The change-over valve consists of a distribution hydraulic block mounted with a flange, where is placed the input from a pump and relief output to a pump. DPT 3 is equipped with by-pass valve with a gradual control of working pressure, which is a set pressure which changes-over the grease flow into second line of lubricating circuit. The valve can be equipped with manometer, showing the actual pressure in dosing pipe.

Technical parameters

Maximum working pressure 400 bar
 Working pressure 350 bar
 Regulating range of working pressure 50 ÷ 380 bar
 Maximum lubricant flow 400 cm³ / min
 Inlet / outlet pipe union M16x1.5

Lubricant oil, grease max NLGI-2
 Temperature - 25 do + 70 °C
 Weight 13.75 kg
 Size showed on the picture

Supplement information

Fixing the valve

The valve may be installed in any position. The valve is being fastened to the body by four anchoring holes ø9mm.

Service and maintenance

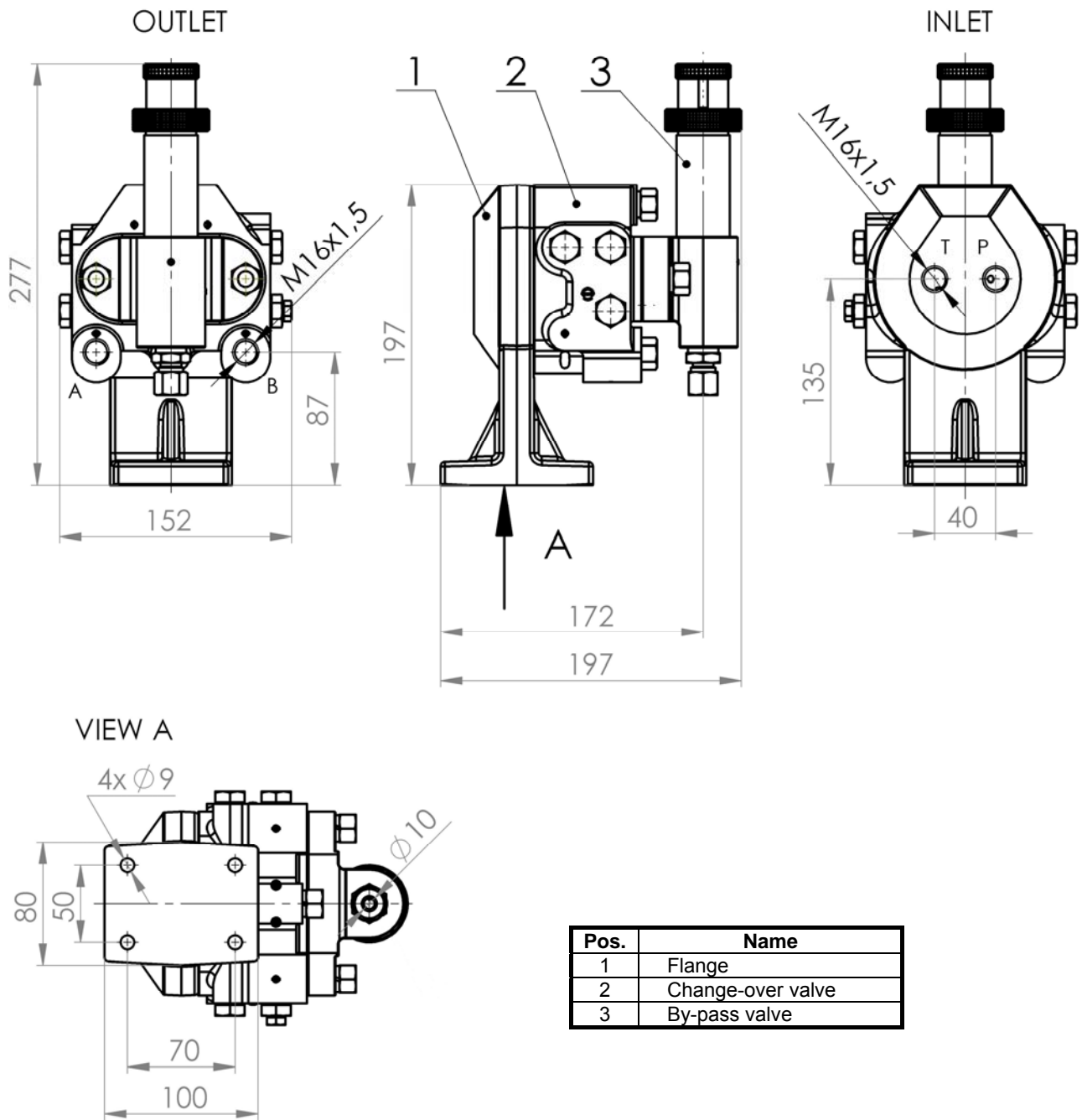
The valve does not require any maintenance. For its reliable operation, it is necessary that the lubricating medium (grease, oil) be free of impurities that may cause the sticking of the closing gate valve.

Signatures of the product

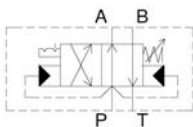
The version of valve is designated by catalogue code.

DPT 3 code 9520877 (without manometer)
 DPT 3 code 9520882 (with manometer)

Valve dimensions without manometer (code 9520877)



Scheme



Valve dimensions with manometer (code 9520882)

