

BARREL-MOUNTED LUBRICATION PUMP

BPG

APPLICATION

BPG lubrication pumps are used as sources of pressure lubricants in circuits of central lubrication systems fitted with progressive distributors. For the systems of grease-splash lubrication, and as filling devices for automatically replenishing arbitrary lubrication devices (63 Z2, UCF, VEG and others) in the course of operation. They are also used independently for the lubrication of extensive circuits with a considerable number of lubricated points. In combination with the hand-operated, pressure-operated or electrically-operated change-over valve the BPG pump may be used as a source of pressure lubricant in the circuits of dual-line central lubrication systems.

The lubrication pumps are delivered for standard barrels of 20, 60 and 200 litres volume. The nominal output is 700 cm³/min. and maximum operating pressure 400 bar. The BPG pumps are pneumatically driven, the air supply pressure is from 4 to 8 bar.

DESCRIPTION

The basic component of the BPG lubrication pump is the body of the pumping unit, connected to the suction pump of length according to the barrel size, so that the device is a compact unit. The barrel is fitted with a sealing cover attached to the barrel with 3 adjustable screws. A pressure rake is inserted into the barrel to improve suction of plastic lubricant. The pump proper is attached to the cover with a round nut. For continuous operation, it is recommended to provide the air supply with a pressure reducing valve fitted with a pressure gauge, condensing mud trap, and lubricator. In the case where the lubrication pump is used as hand operated filler, the outlet is fitted with a lubricating gun with its hose and terminals.

OPERATION

The barrel-mounted lubrication pump is driven by the supplied air pressure. Incorporated before the pump intake is the filter, separator and air pressure regulator (included in the delivered accessories). The supplied air is automatically diverted by the distributor to alternating sides of the drive piston, which causes the reciprocating motion. This motion is mechanically transmitted to the working pump piston. The by-pass piston and suction valve mechanism makes the sucked grease pass over the piston and move it to the outlet of the lubrication pump.

SERVICE AND MAINTENANCE

Place the barrel-mounted lubrication pump on a horizontal concrete or steel base. Close the barrel with the cover and install the lubrication pump in it. Attach the pump to the cover with the round nut. Then connect the lubrication pump to the air supply. Put the lubrication pump into operation and check that it runs quietly and smoothly. When the lubricant exits continuously and free of bubbles, close the outlet by connecting it to the outlet piping to the lubrication circuit.

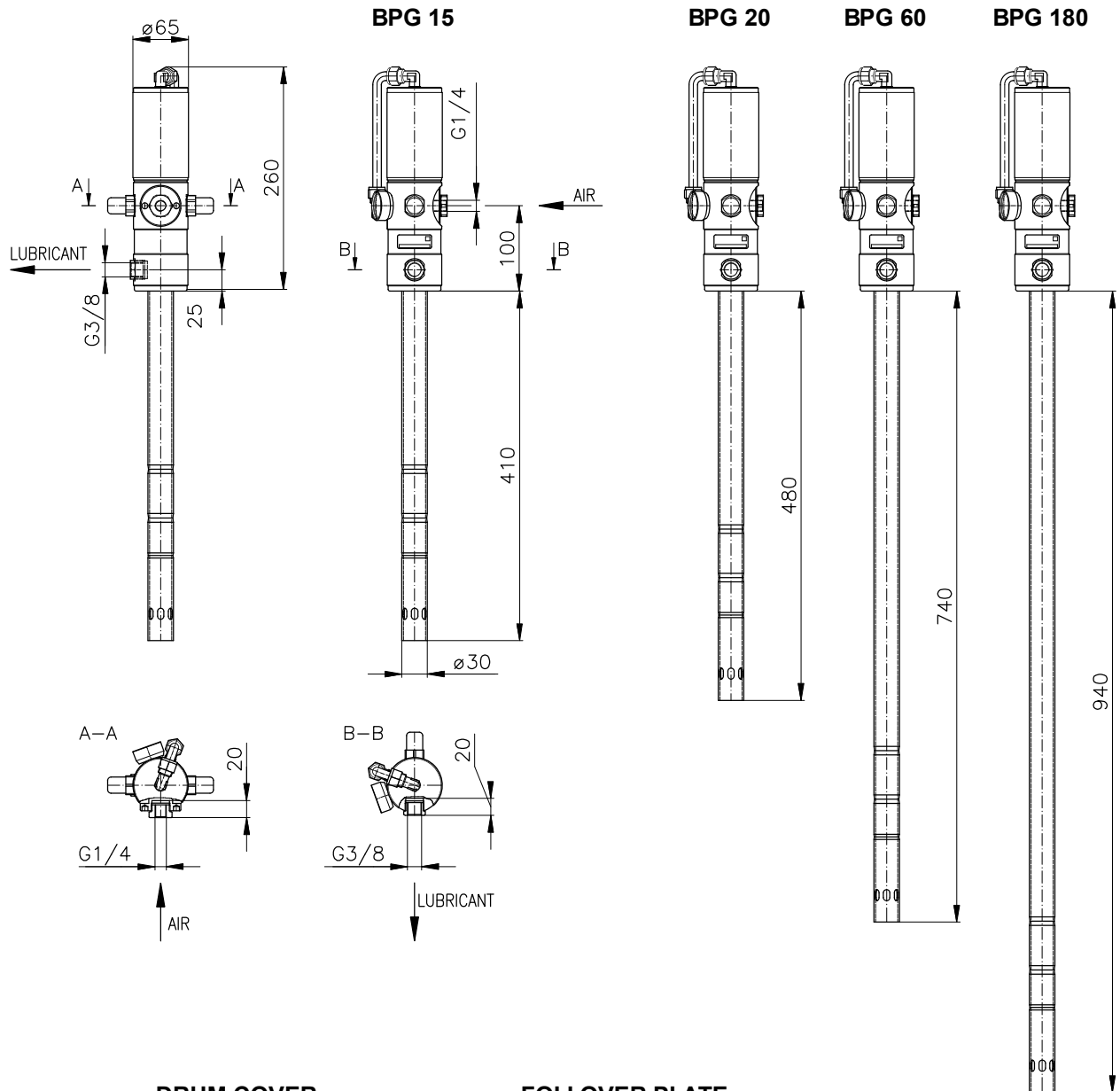
Except for the replenishment of lubricant (replacement of barrels), the lubrication pump does not require any maintenance. For continuous operation, it is recommended to check the lubrication circuit connections for tightness every three months.

TECHNICAL DATA

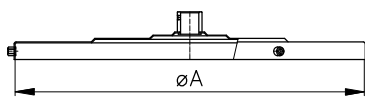
Maximum pressure	400 bar	
Working pressure	350 bar	
Nominal supplied quantity	700 cm ³ /min.	
Lubricant reservoir capacity	20, 60, 200 dm ³	
Number of outlets	1	
Outlet pipe union	G3/8" (inside thread)	
Air pressure	4 to 8 bar	
Pressure air consumption	max. 180 dm ³ /min.	
Pressure air supply	G1/4" (inside thread)	
Lubricant	grease	max. NLGI-2
Temperature of working environment	-25 to 60°C	
Weight	16 kg (without barrel)	

NOTE:

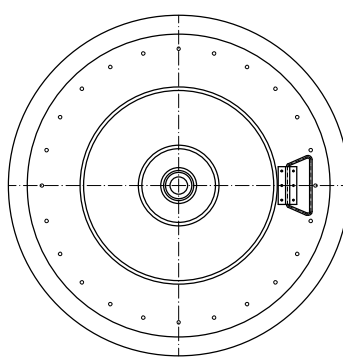
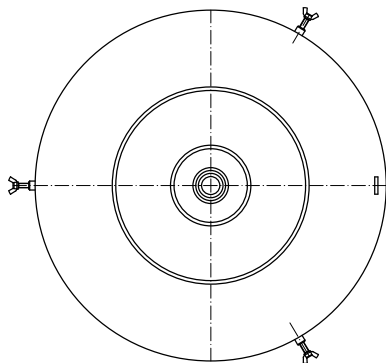
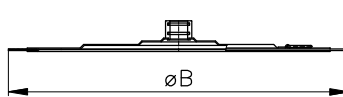
According to the demand is BPG equipped with minimum level signalling. Must be specified in the order as a separate item.



DRUM COVER

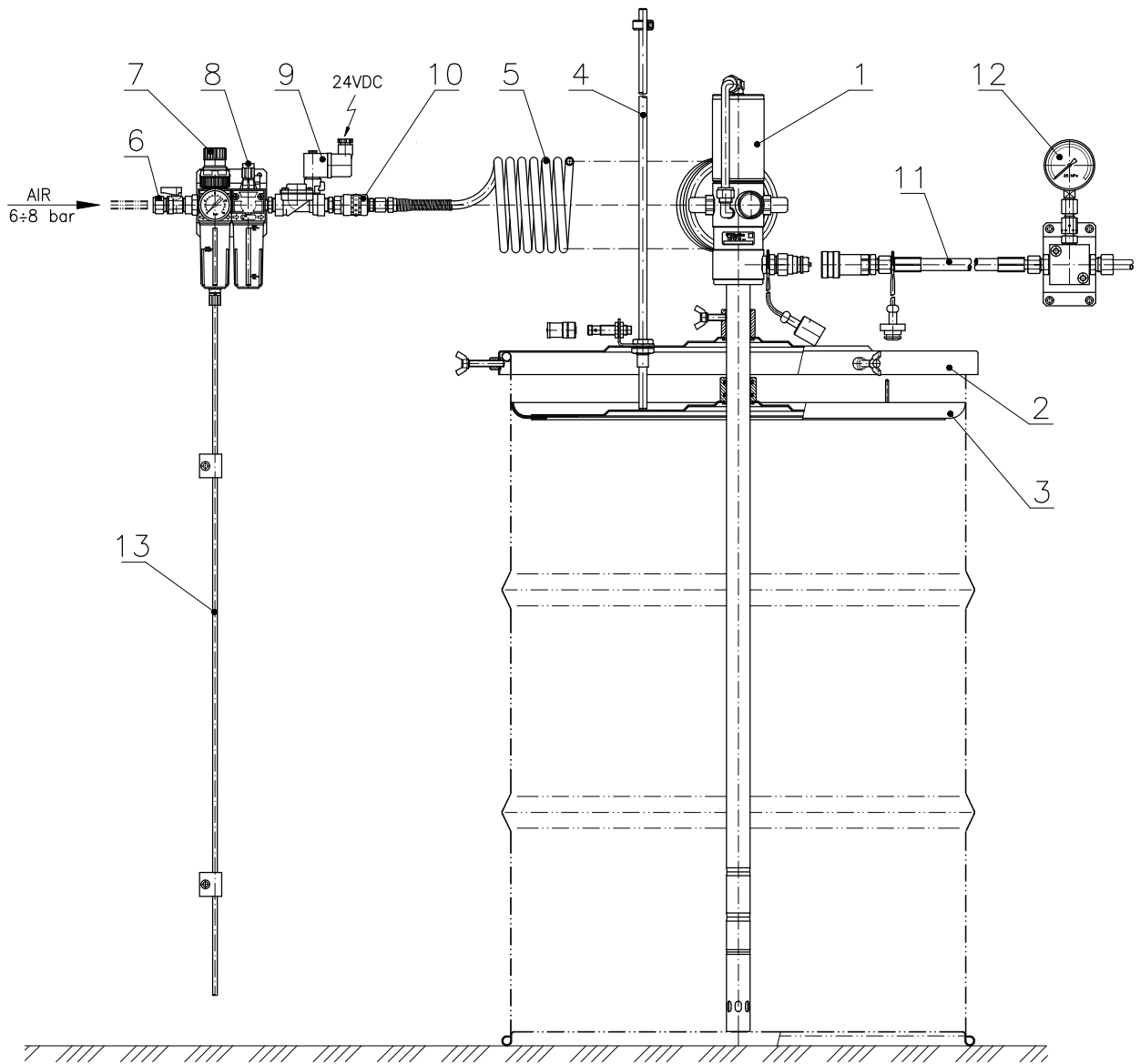


FOLLOWER PLATE

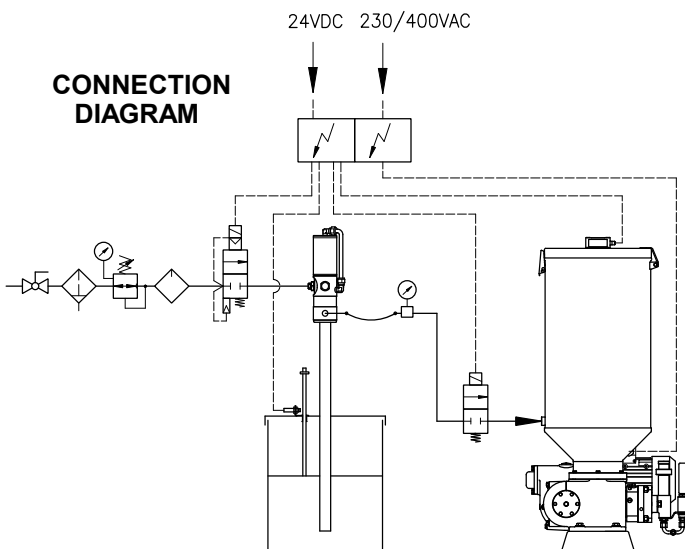


Drum size	ØA	ØB
12÷20 kg	280	265
16÷30 kg	310	310
20÷30 kg	350	340
50÷60 kg	385	370
50÷60 kg	420	400
180÷200 kg	600	585

Name	BARREL LUBRICATION PUMP		Tribotec s.r.o. Košuličova 4 Brno www.tribotec.cz +420 543 425 611
Type	BPG		
Code			



**CONNECTION
DIAGRAM**



Pos	Name
1	Barel lubricant pump
2	Drum cover
3	Follower plate
4	Minimum level indicator
5	Spiral hose
6	Ball stopcock
7	Filter regulator
8	Lubricator, gauge
9	Elektropneumatic valve
10	Hose quick-coupling
11	High pressure hose with quick-coupling
12	Monitoring pressure gauge
13	Condensation draining pipe

Name

FILLING STATION

Type

CUSTOMIZED MODEL

Code

Tribotec s.r.o.

Košuličova 4 Brno

www.tribotec.cz

+420 543 425 611