

# MOBILE LUBRICATION PUMP

# UCP

## APPLICATION

The UCP mobile lubrication set is used for fast and reliable lubrication of bearings, pins and other lubricated points of mobile machines, machinery and transport vehicles, e.g. excavators, cranes, trucks, buses, agricultural and forestry devices, construction machinery, etc.

The UCP set is delivered with a lubricant container of 12 litres volume and nominal output of 50 cm<sup>3</sup>/min. Standard electric motors are 230/400V, for other voltages, consult with the supplier.

## DESCRIPTION

The mobile lubricator is attached to a chassis frame. The lubricator is composed of a body that houses 2 worm-gearled pumping units, a tank provided with a steel scraper, and an electric motor that is flange mounted to the body. A by-pass valve is attached to the casing. A pressure gauge with damper and a high-pressure hose with lubricating gun are connected to the lubricator outlet. The lubricator is equipped with an electric switch, circuit breaker and a forked cable.

## OPERATION

On connecting the lubricator to a power source and turning on the switch, the electric motor starts. Its rotary motion is transferred to the eccentric shaft via the worm gear. The rotary motion of the shaft is converted into a rectilinear motion of pumping unit pistons. The lubricant is sucked when the piston moves inward and is forced out when the piston moves outward. The by-pass valve is used to adjust the pressure. Use the control nut to adjust the working pressure. The lubricator outlet is provided with a pressure gauge to check the set pressure. A scraper is located on the eccentric shaft inside the tank. This scrapes lubricant from the walls and guides it towards the suction space.

## SERVICE AND MAINTENANCE

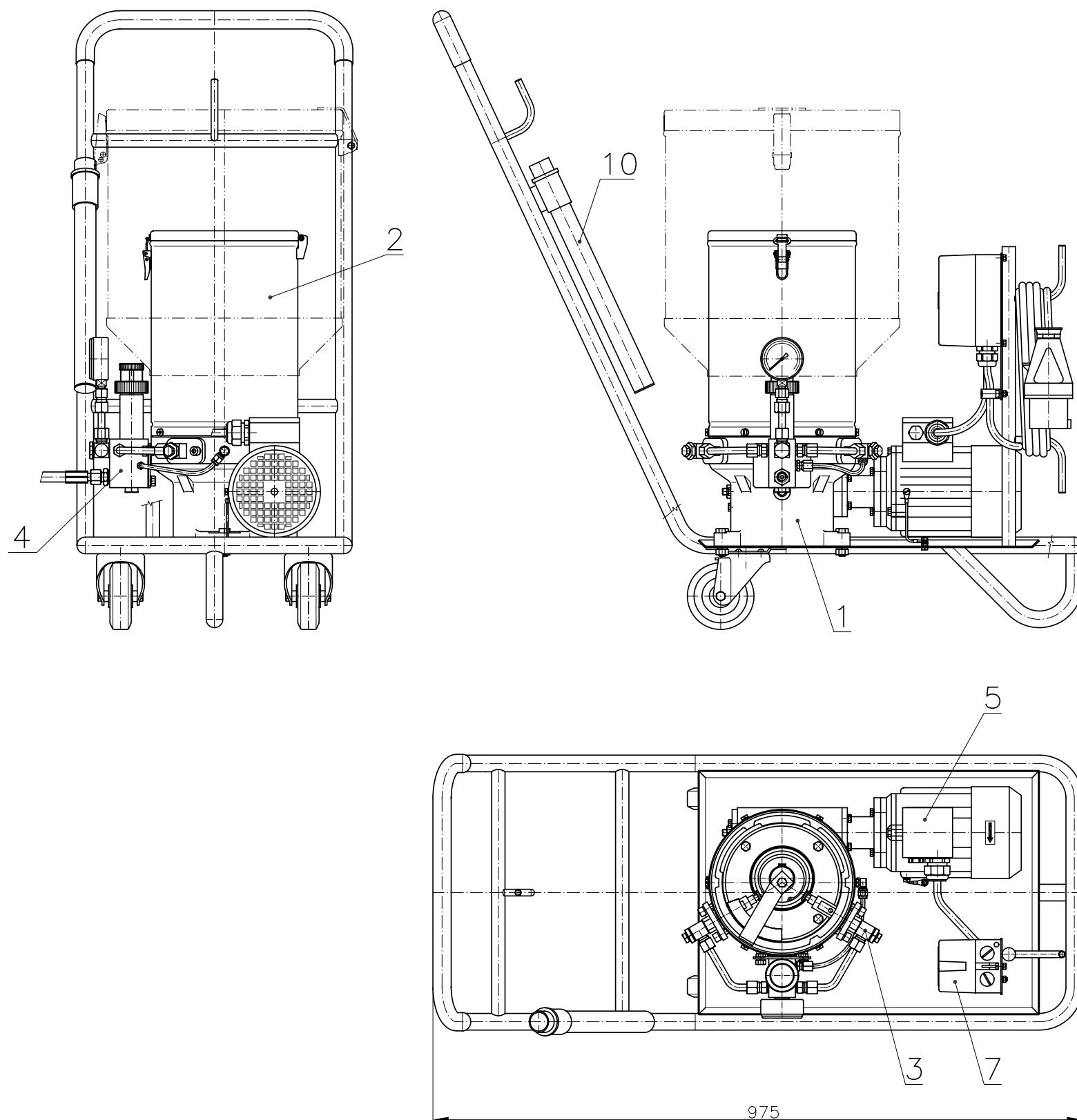
Check and remove any contamination from the lubricant container. Connect the cable plug to the power network and switch on. When the set is in operation check that it runs smoothly and regularly. The lubricant left in the set after the pressure test as a preservation agent is pumped out. When the lubricant supplied from the lubricating gun flows out regularly without bubbles, the lubricating set is ready to be used. The adjustment of required pressure is carried out on the by-pass valve as required. The by-pass pressure is verified on the pressure gauge.

The lubricant should be refilled when the lubricant level falls down to the reduced part of the container. If the container is fully emptied, the set must be bled. Lubricant is refilled directly to the tank after lifting the cover. The cleanliness of the lubricant must be strictly ensured during the refilling operation. With the exception of lubricant refilling, any other maintenance of the set is not required.

---

**TECHNICAL DATA**

Maximum pressure		250 bar
Working pressure		200 bar
Regulating range of working pressure		50 to 250 bar
Nominal output		50 cm <sup>3</sup> /min.
Lubricant reservoir capacity		12 dm <sup>3</sup>
Number of outlets		1 (into lubricating gun)
Electric motor		230/400V, 1.05A, 500V, 0.84A 50Hz, 0.3 kW
Lubricant	grease	max. NLGI-2
	oil	min. 50 mm <sup>2</sup> /s.
Temperature of working environment		-25 to 40°C
Weight		50 kg



Pos	Name
1	Pump body
2	Lubricant tank
3	Working unit
4	By-pass valve with adjusting female screw
5	Electric motor
6	Filling hole
7	Switch
8	Lubricating gun
9	High pressure hose 5m
10	Dripping tube

Name	MOBILE LUBRICATOR		<b>©Tribotec</b> s.r.o. Košuličova 4 Brno www.tribotec.cz +420 543 425 611
Type	UCP 12I	(UCP 30I)	
Code	9 50 0690	(9 50 1861)	